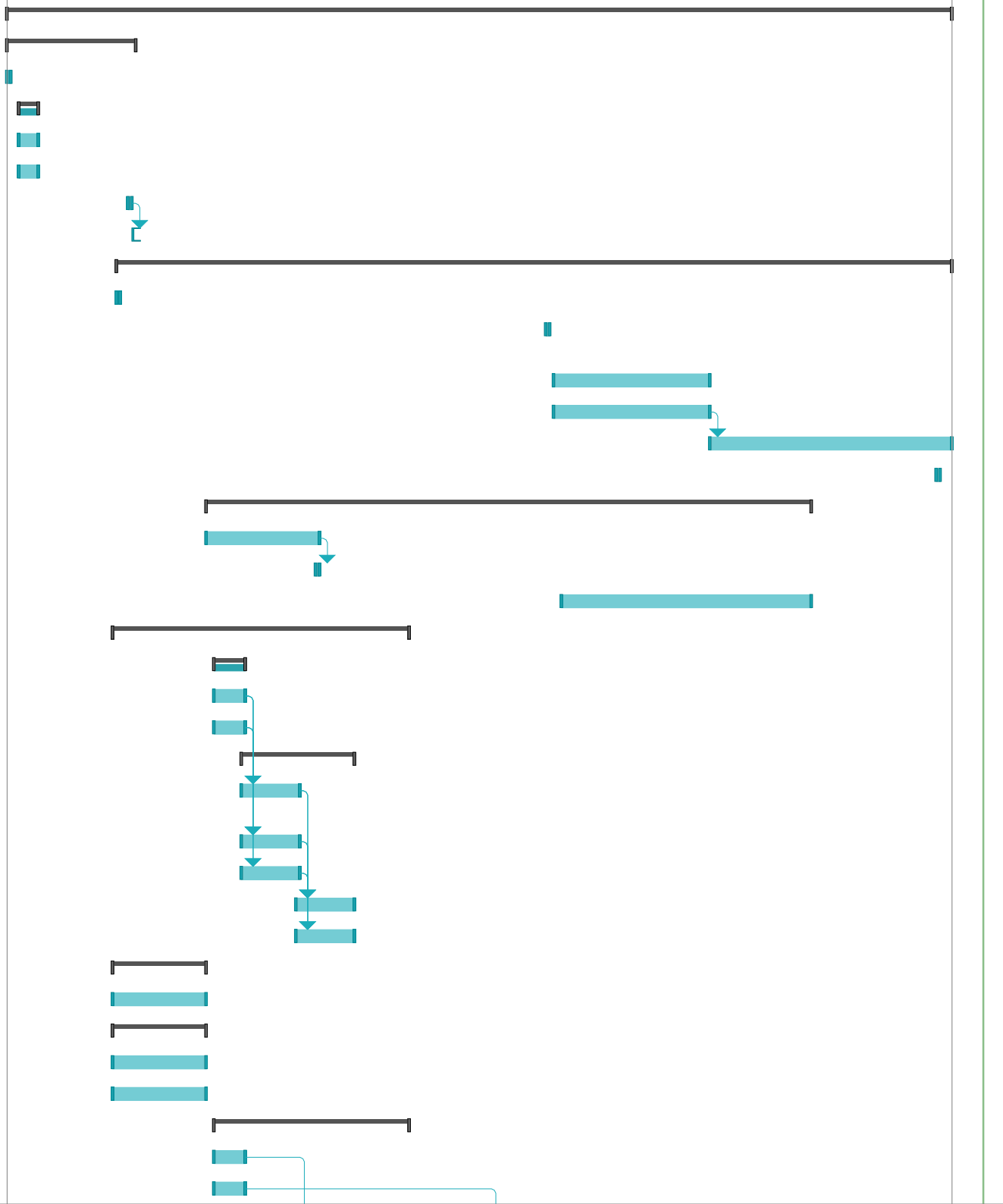
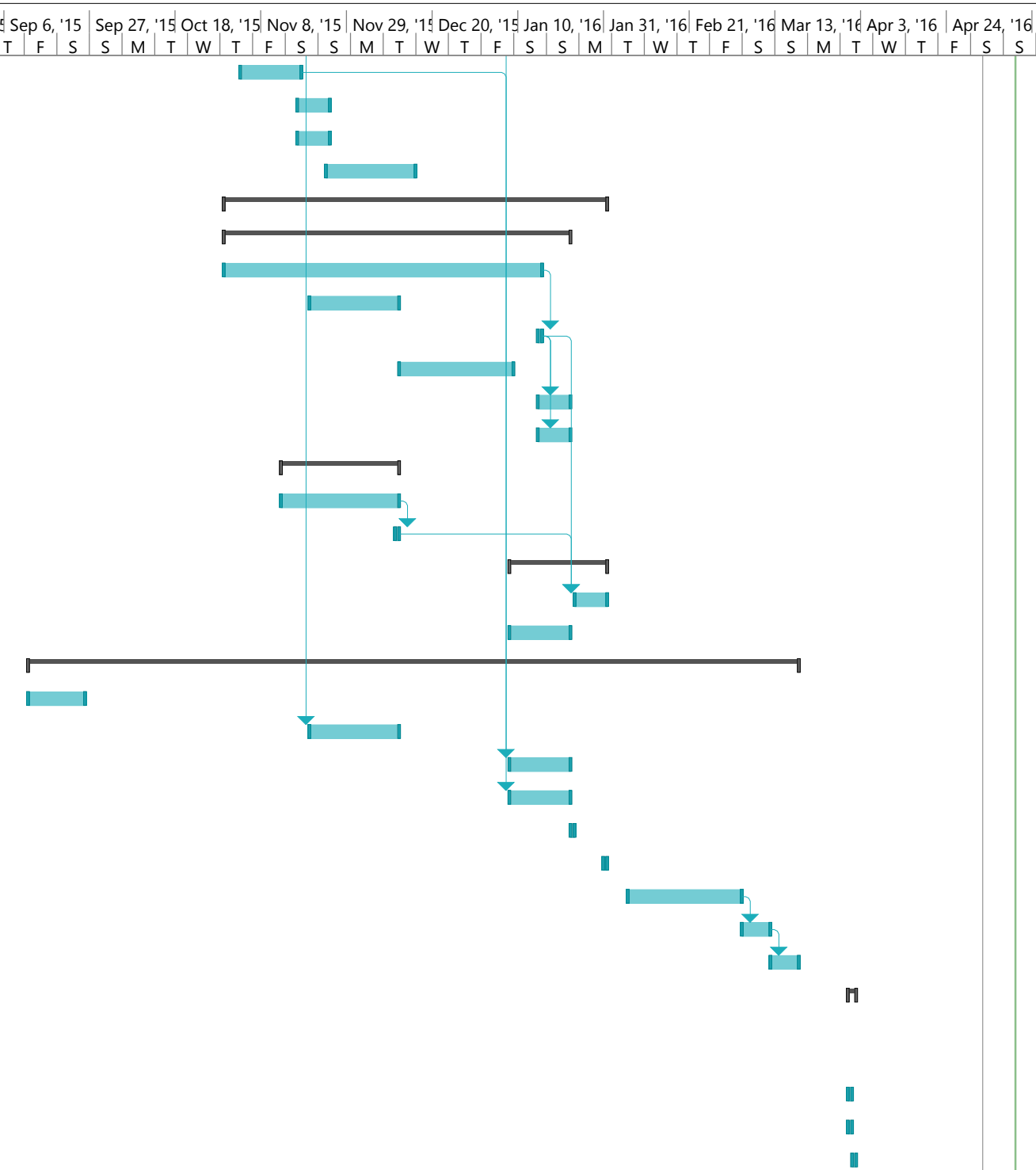


ID	Task Mode	Task Name	Duration	Start	Finish	Predecessors	Team Lead	Time to Complete	Aug 16, '15	Sep 6, '15	Sep 27, '15	Oct 18, '15	Nov 8, '15	Nov 29, '15	Dec 20, '15	Jan 10, '16	Jan 31, '16	Feb 21, '16	Mar 13, '16	Apr 3, '16	Apr 24, '16	
1		NAU ASCE 2015-16 Concrete Canoe: Po	242 days?	Fri 9/4/15	Mon 5/2/16																	
2		1.0 Project Management	33 days	Fri 9/4/15	Tue 10/6/15																	
3		1.1 Concrete Canoe Team Set	1 day	Fri 9/4/15	Fri 9/4/15																	
4		1.2 Project Preparation	5 days	Mon 9/7/15	Fri 9/11/15																	
5		1.2.1 Safety Training	5 days	Mon 9/7/15	Fri 9/11/15		CK															
6		1.2.2 Building Access	5 days	Mon 9/7/15	Fri 9/11/15		CK															
7		1.3 Budgeting	1 day	Mon 10/5/15	Mon 10/5/15		CK															
8		1.4 Fundraising		Tue 10/6/15		7	CK															
9		2.0 CENE 486 Capstone (dates are appro	214 days	Fri 10/2/15	Mon 5/2/16																	
10		2.1 ASCE Conference Rule Review - De	1 day	Fri 10/2/15	Fri 10/2/15		BL															
11		2.2 ASCE Conference Rule Review - Conference Deliverables	1 day	Wed 1/20/16	Wed 1/20/16																	
12		2.3 Website	40 days	Fri 1/22/16	Tue 3/1/16																	
13		2.4 50% Report	40 days	Fri 1/22/16	Tue 3/1/16		CK															
14		2.5 Final Report	62 days	Wed 3/2/16	Mon 5/2/16	13	CK															
15		2.6 Undergraduate Symposium	1 day	Fri 4/29/16	Fri 4/29/16		CK															
16		3.0 Paddling	155 days	Sun 10/25/15	Sun 3/27/16																	
17		3.1 Start Paddling Practice	29 days	Sun 10/25/15	Sun 11/22/15		EK															
18		3.2 Select Teams and Positions	1 day	Sun 11/22/15	Sun 11/22/15	17	EK															
19		3.3 Continue Paddling Practice	64 days	Sun 1/24/16	Sun 3/27/16		EK															
20		4.0 Analysis and Design	76 days	Thu 10/1/15	Tue 12/15/15																	
21		4.1 Hull Analysis	8 days	Tue 10/27/15	Tue 11/3/15																	
22		4.2.1 Drag Resistance, Buoyant Force	8 days	Tue 10/27/15	Tue 11/3/15		BL															
23		4.2.2 Prolines Verification	8 days	Tue 10/27/15	Tue 11/3/15		BL															
24		4.2 Structural Analysis	29 days	Tue 11/3/15	Tue 12/1/15																	
25		4.2.1 Shear and Moment Analysis, Cross Sectional Analysis	15 days	Tue 11/3/15	Tue 11/17/15	22,23	BL															
26		4.2.2 Parabolic Analysis, Flexural Capacity	15 days	Tue 11/3/15	Tue 11/17/15	22,23	BL															
27		4.2.3 2D/3D Analysis	15 days	Tue 11/3/15	Tue 11/17/15	22,23	BL															
28		4.2.4 Bulkhead design	15 days	Tue 11/17/15	Tue 12/1/15	25,26,27	BL															
29		4.2.5 Rib design	15 days	Tue 11/17/15	Tue 12/1/15	25,26,27	BL															
30		4.3 Concrete Mix Design	24 days	Thu 10/1/15	Sat 10/24/15																	
31		4.3.1 Material Research	24 days	Thu 10/1/15	Sat 10/24/15		EK															
32		4.4 Reinforcement	24 days	Thu 10/1/15	Sat 10/24/15																	
33		4.4.1 Research reinforcement materials	24 days	Thu 10/1/15	Sat 10/24/15		EM															
34		4.4.2 Research post-tensioning materials	24 days	Thu 10/1/15	Sat 10/24/15		EM															
35		4.5 Construction Management	50 days	Tue 10/27/15	Tue 12/15/15																	
36		4.5.1 Mold Renovation Design	8 days	Tue 10/27/15	Tue 11/3/15		CM															
37		4.5.2 Coffin Renovation Design	8 days	Tue 10/27/15	Tue 11/3/15		CM															



Project: Concrete Canoe Gantt Date: Wed 5/11/16	Task		Project Summary		Manual Task		Start-only		Deadline	
	Split		Inactive Task		Duration-only		Finish-only		Progress	
	Milestone		Inactive Milestone		Manual Summary Rollup		External Tasks		Manual Progress	
	Summary		Inactive Summary		Manual Summary		External Milestone			

ID	Task Mode	Task Name	Duration	Start	Finish	Predecessor	Team Lead	Time to Complete	Aug 16, '15	Sep 6, '15	Sep 27, '15	Oct 18, '15	Nov 8, '15	Nov 29, '15	Dec 20, '15	Jan 10, '16	Jan 31, '16	Feb 21, '16	Mar 13, '16	Apr 3, '16	Apr 24, '16							
									T	W	T	F	S	S	M	T	W	T	F	S	S	M	T	W	T	F	S	S
38	🚀	4.5.3 Incubator System Design	15 days	Tue 11/3/15	Tue 11/17/15		CM																					
39	🚀	4.5.4 Pour day requirements	8 days	Tue 11/17/15	Tue 11/24/15		CM																					
40	🚀	4.5.5 Canoe Transport Design	8 days	Tue 11/17/15	Tue 11/24/15		CE																					
41	🚀	4.5.6 Post Tensioning Design	22 days	Tue 11/24/15	Tue 12/15/15		EM/BL																					
42	📁	5.0 Testing	94 days	Fri 10/30/15	Sun 1/31/16																							
43	📁	5.1 Concrete Mix Design	85 days	Fri 10/30/15	Fri 1/22/16																							
44	🚀	5.1.1 Concrete mixing and testing	78 days	Fri 10/30/15	Fri 1/15/16		EK																					
45	🚀	5.3.2 Concrete stain and pigmentat	22 days	Fri 11/20/15	Fri 12/11/15		EK																					
46	🚀	5.1.2 Mix design selection	1 day	Fri 1/15/16	Fri 1/15/16	44	EK																					
47	🚀	5.1.3 Shrinkage testing	28 days	Sat 12/12/15	Fri 1/8/16		EK																					
48	🚀	5.1.4 Flexural testing	8 days	Fri 1/15/16	Fri 1/22/16	46	EK																					
49	🚀	5.1.5 Tensile testing	8 days	Fri 1/15/16	Fri 1/22/16	46	EK																					
50	📁	5.2 Reinforcement	29 days	Fri 11/13/15	Fri 12/11/15																							
51	🚀	5.2.1 Reinforcement Testing	29 days	Fri 11/13/15	Fri 12/11/15		EM																					
52	🚀	5.2.1 Reinforcement selection	1 day	Fri 12/11/15	Fri 12/11/15	51	EM																					
53	📁	5.3 Composite Testing and Design	24 days	Fri 1/8/16	Sun 1/31/16																							
54	🚀	5.3.1 Concrete with reinforcement	8 days	Sun 1/24/16	Sun 1/31/16	46,52	EK/EM																					
55	🚀	5.3.3 Post-tensioning anchorage sys	15 days	Fri 1/8/16	Fri 1/22/16		EK/EM																					
56	📁	6.0 Construction	189 days	Sat 9/12/15	Fri 3/18/16																							
57	🚀	6.1 Inventory and Farm Clean-up	14 days	Sat 9/12/15	Fri 9/25/15		CM/EK																					
58	🚀	6.2 Mold Fabrication	22 days	Fri 11/20/15	Fri 12/11/15	36	CM																					
59	🚀	6.3 Coffin Renovation	15 days	Fri 1/8/16	Fri 1/22/16	37	CM																					
60	🚀	6.4 Incubator Construction	15 days	Fri 1/8/16	Fri 1/22/16	38	CM																					
61	🚀	6.5 Test Pouring/ Shotcrete	1 day	Sat 1/23/16	Sat 1/23/16		CM																					
62	🚀	6.6 Final mix/ batch preparation	1 day	Sun 1/31/16	Sun 1/31/16		CM/EK																					
63	🚀	6.7 Canoe Pour	28 days	Sat 2/6/16	Fri 3/4/16		CM/EK																					
64	🚀	6.8 Canoe artwork and design	7 days	Sat 3/5/16	Fri 3/11/16	63																						
65	🚀	6.9 Canoe finishing	7 days	Sat 3/12/16	Fri 3/18/16	64	CM/EK																					
66	📁	7.0 ASCE PSWC Conference	2 days?	Thu 3/31/16	Fri 4/1/16																							
67	🚀?	7.1 Design Report					EM																					
68	🚀?	7.2 Engineer's Notebook					EM																					
69	🚀	7.3 Presentation Day	1 day	Thu 3/31/16	Thu 3/31/16		EM																					
70	🚀	7.4 Final Product Display	1 day	Thu 3/31/16	Thu 3/31/16		EM																					
71	🚀	7.5 Canoe Races	1 day	Fri 4/1/16	Fri 4/1/16																							



Project: Concrete Canoe Gantt
Date: Wed 5/11/16

Task		Project Summary		Manual Task		Start-only		Deadline	
Split		Inactive Task		Duration-only		Finish-only		Progress	
Milestone		Inactive Milestone		Manual Summary Rollup		External Tasks		Manual Progress	
Summary		Inactive Summary		Manual Summary		External Milestone			